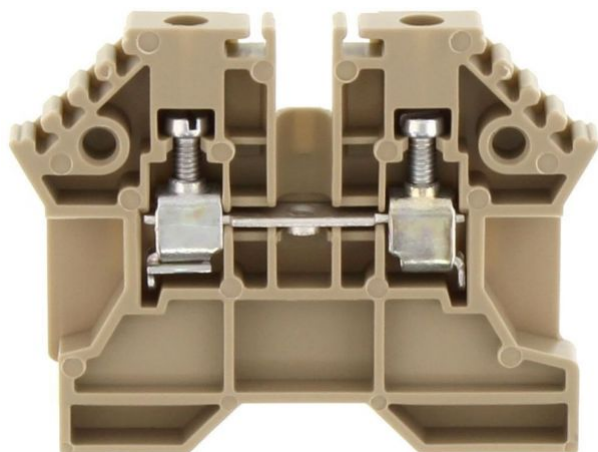


1387.2

KBL 2,5-D BG

KBL 2,5-D BG



Feed-through terminal for direct mount/block variant, Screw connection, Mounting type: Mounting surface, Rated cross-section: 2.5 mm², Width: 5 mm, Colour: Beige

Business data

Product description	Feed-through terminal for direct mount/block variant
Packaging unit	100
Quantity unit	PC
Weight per piece (not including packaging)	5.66
Weight per piece (including packaging)	6.43
Unit of weight	G
Customs number	85369010
Country of origin	DE

1387.2

KBL 2,5-D BG

KBL 2,5-D BG

Technical Data

Dimensions

Length	48 mm
Width	5 mm
Height	36.5 mm

Ratings

Rated voltage	300 V
Rated current	20 A
Rated cross-section	2.5 mm ²
Rated impulse voltage	6 kV
Overvoltage category	III
Contamination degree	3

1387.2

KBL 2,5-D BG

KBL 2,5-D BG

Technical Data

Connection data

Connection principle	Screw connection
Connection position	Lateral
Connections	2
Number of terminals per level	2
Number of levels	1
Wire cross-section single-core (rigid) / stranded, min.	0.2 mm ²
Wire cross-section single core (rigid)/stranded, max.	4 mm ²
Wire cross-section stranded, min.	0.2 mm ²
Wire cross-section stranded, max.	4 mm ²
Wire cross-section stranded with wire-end ferrules, min.	0.2 mm ²
Wire cross-section stranded with wire-end ferrules, max.	2.5 mm ²
Wire cross-section AWG, min.	22
Wire cross-section AWG, max.	14
Stripping length	7 mm
Screw head	Slotted
Screw threading	M 2,5
Tightening torque, min.	0.4 Nm
Tightening torque, max.	0.8 Nm

1387.2

KBL 2,5-D BG

KBL 2,5-D BG

Technical Data

Materials

Insulation housing	Polyamide 6.6
--------------------	---------------

Flammability class UL 94	V-2
--------------------------	-----

Working temperature, min.	-40 °C
---------------------------	--------

Working temperature, max.	105 °C
---------------------------	--------

Further technical data

Mounting type	Mounting face
---------------	---------------

Gauge plug acc. to EN 60 947-1	A3
--------------------------------	----

Number of cross-connection channels	1
-------------------------------------	---

End plate required	✓
--------------------	---

Number of test pick-off options	1
---------------------------------	---

1387.2

KBL 2,5-D BG

KBL 2,5-D BG

Approvals

Standards and regulations

EAC approval	TR ZU 004/2011
--------------	----------------

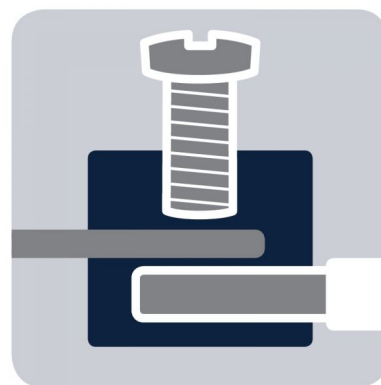
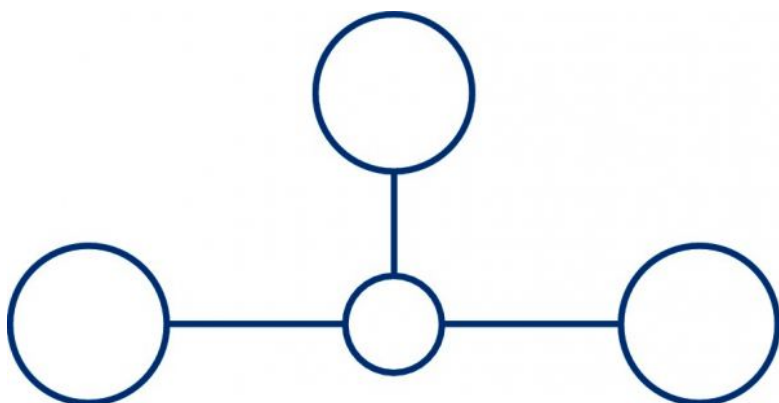
EAC approval granted	✓
----------------------	---

1387.2

KBL 2,5-D BG

KBL 2,5-D BG

Media



M2.5



EAC

1387.2

KBL 2,5-D BG

KBL 2,5-D BG

Accessories

Cover

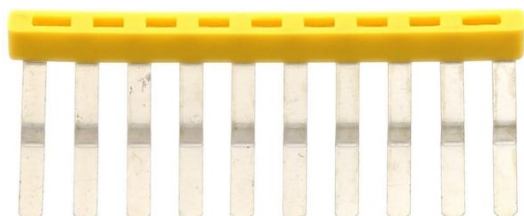


Cover, Length: 26.5 mm, Width: 5 mm, Colour: Yellow

In general

Order number	Article designation	GTIN (EAN)	Packaging unit
2952.0	AD 1/5/B	4044211056803	50 PC

External insulated cross-connector



External insulated cross-connector, No. of poles: 10, Mounting type: Plug in, Width: 50.1 mm, Rated current: 27 A; Colour: Yellow

In general

Order number	Article designation	GTIN (EAN)	Packaging unit
2029.0	AQI 10/5/15	4044211048327	10 PC

1387.2

KBL 2,5-D BG

KBL 2,5-D BG

Accessories

External insulated cross-connector



External insulated cross-connector, No. of poles: 2,
Mounting type: Plug in, Width: 9.26 mm, Rated
current: 27 A; Colour: Yellow

In general

Order number	Article designation	GTIN (EAN)	Packaging unit
2023.0	AQI 2/5/15	4044211048266	50 PC



External insulated cross-connector, No. of poles: 3,
Mounting type: Plug in, Width: 14.36 mm, Rated
current: 27 A; Colour: Yellow

In general

Order number	Article designation	GTIN (EAN)	Packaging unit
2024.0	AQI 3/5/15	4044211048273	50 PC

1387.2

KBL 2,5-D BG

KBL 2,5-D BG

Accessories

External insulated cross-connector

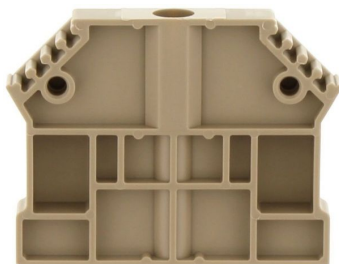


External insulated cross-connector, No. of poles: 4, Mounting type: Plug in, Width: 19.46 mm, Rated current: 27 A; Colour: Yellow

In general

Order number	Article designation	GTIN (EAN)	Packaging unit
2028.0	AQI 4/5/15	4044211048310	50 PC

End holder



End support, Mounting type: Mounting surface, Width: 8 mm, Colour: Beige

In general

Order number	Article designation	GTIN (EAN)	Packaging unit
2180.2	EH 4	4044211050023	50 PC

1387.2

KBL 2,5-D BG

KBL 2,5-D BG

Accessories

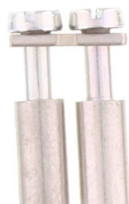
Cross connector



Cross-connector, No. of poles: 10, Mounting type: Can be screwed on, Width: 49.9 mm, Rated cross-section: 2.5 mm², Colour: natural

In general

Order number	Article designation	GTIN (EAN)	Packaging unit
2570.0	Q 10	4044211053604	10 PC



Cross-connector, No. of poles: 2, Mounting type: Can be screwed on, Width: 9.1 mm, Rated cross-section: 2.5 mm², Colour: natural

In general

Order number	Article designation	GTIN (EAN)	Packaging unit
2567.0	Q 2	4044211053574	50 PC

1387.2

KBL 2,5-D BG

KBL 2,5-D BG

Accessories

Cross connector



Cross-connector, No. of poles: 3, Mounting type: Can be screwed on, Width: 14.2 mm, Rated cross-section: 2.5 mm², Colour: natural

In general

Order number	Article designation	GTIN (EAN)	Packaging unit
2568.0	Q 3	4044211053581	50 PC



Cross-connector, No. of poles: 4, Mounting type: Can be screwed on, Width: 19.3 mm, Rated cross-section: 2.5 mm², Colour: natural

In general

Order number	Article designation	GTIN (EAN)	Packaging unit
2569.0	Q 4	4044211053598	20 PC

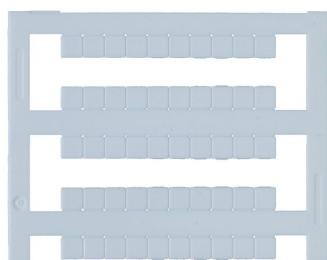
1387.2

KBL 2,5-D BG

KBL 2,5-D BG

Accessories

Quick-marking



Terminal marker / Pocket Maxicard, Length: 5 mm,
Width: 5 mm, Colour: White

In general

Order number	Article designation	GTIN (EAN)	Packaging unit
4600.7	PMC SB 5/50 WH	4044211088903	500 PC

Screw driver



Screwdriver with bare blade, Colour: Black-grey

In general

Order number	Article designation	GTIN (EAN)	Packaging unit
1085.0	SDB 0,5x3,0	4044211014643	1 PC
