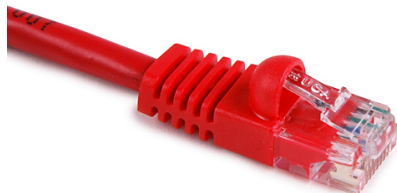


## Specification Sheet

Part Number: PCRED10



Category 5e Patch Cord, 10.0 ft, Red, 1/pkg

**Article Number**

851-14233

**Type**

PC5E

**Color**

Red (RD)

**Features & Benefits**

- Exceeds Category 5e performance standards
- Pre-tested with test results supplied
- Manufactured with PVC Sheath
- Available in standard lengths of 1m, 2m, 3m, 5m and 10m
- Non-standard lengths available on request

**Product Description**

Category 5e Copper Patch Leads are a critical component in ensuring the end to end performance of a network. The Category 5e Patch leads incorporate a low profile shielded plug suitable for high density applications with an integral strain relief boot to minimize force on terminations and to assist in managing the bend radius of the cable.

**Short Description**

Category 5e Patch Cord, 10.0 ft, Red, 1/pkg

<b>Global Part Name</b>	PC5E
<b>Technical Description</b>	Category 5e patch cord, 10.0 ft, Red
<b>Length L (Imperial)</b>	10.0
<b>UL Listed (US and Canada)</b>	Yes
<b>UL Listed (US)</b>	Yes
<b>Package Quantity(Imperial)</b>	1
<b>Package Quantity (Metric)</b>	1
<b>Customs Number</b>	8544420000