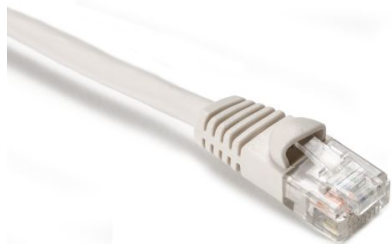


Specification Sheet

Part Number: PCW14



Category 5e Patch Cord, 14.0 ft, White, 1/pkg

Article Number

851-14209

Type

PC5E

Color

White (WH)

Features & Benefits

- Exceeds Category 5e performance standards
- Pre-tested with test results supplied
- Manufactured with PVC Sheath
- Available in standard lengths of 1m, 2m, 3m, 5m and 10m
- Non-standard lengths available on request

Quantity Per

bag

Product Description

Category 5e Copper Patch Leads are a critical component in ensuring the end to end performance of a network. The Category 5e Patch leads incorporate a low profile shielded plug suitable for high density applications with an integral strain relief boot to minimize force on terminations and to assist in managing the bend radius of the cable.

Short Description Category 5e Patch Cord, 14.0 ft, White, 1/pkg

Global Part Name PC5E

Technical Description Category 5e Patch Cord, 14.0 ft, White

Length L (Imperial) 14.0

Length L (Metric) 4.267

UL Listed (US and Canada) Yes

UL Listed (US) Yes

Package Quantity(Imperial) 1

Package Quantity (Metric) 1

Customs Number 8544420000