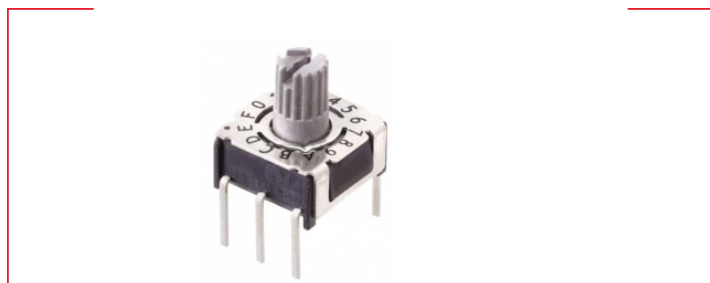




Technical data // P36THR 1 01 - -

Rotary Code Switch  
Through Hole Reflow



**Highlights**

- Solid PCB pins
- Central C-contact
- Contacts with abrasion resistant hard gold plating
- Extra sealed design with high temperature resistance
- Switches are solder and flux sealed and washable
- 100 % electronic inspection and testing
- 90° turned zero position available

**Mechanical Data**

Type	horizontal
Fixation mode	THR
Height	3.65 mm
Length	7.4 mm
Width	7.4 mm
Pin connection	3+3
Perm. ambient temperature	-50 °C ... +125 °C
Perm. storage temperature	-55 °C ... +135 °C
Torque	1.2 ± 0.2 Ncm
Mechanical lifetime	25.000 steps
Positions per rotation	10 / 16 - more versions on request
Degree of protection	comparable IP67
Sealing	O-Ring
Humidity	21 days at 40 °C, 93 %RH
THR through holes	plated through
THR PCB hole diameter	0.8 mm
Outside diameter plated land	1.8 mm
Sinus-vibration testing	acc. IEC 68-2-6
Frequency range	10 Hz ... 500 Hz ... 10 Hz, sliding
Amplitude	6.0 mm
Acceleration	10.0 g
Shock testing	acc. IEC 68-2-27



Technical data

// P36THR 1 01 - -

Rotary Code Switch

Through Hole Reflow

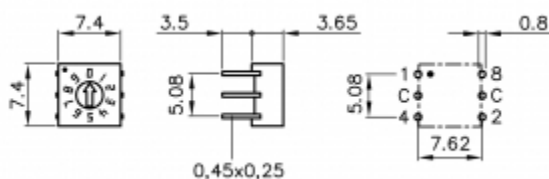
**Mechanical Data**

Shock acceleration amplitude	50.0 g
Duration of nominal shock	11.0 ms
Directions	6 ( $\pm x, \pm y, \pm z$ ) 3 times each
Reflow soldering	JDEC J-STD-020 E
Wave soldering	Double Wave acc. DIN EN 61760-1:2006
Iron soldering	4 s / 350 °C

**Electrical Data**

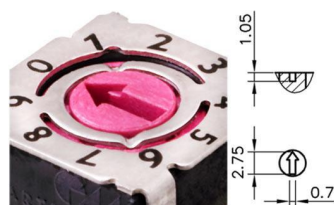
Operating voltage	$\leq 42.0$ V
Standby current	$\leq 0.4$ A
Contact load, dynamic	$\leq 0.1$ A
Minimum load	1.0 $\mu$ A 20mVDC
Test voltage	250.0 V 50 Hz / 1.0 min
Contact resistance	$< 80.0$ mOhm
Insulation resistance	$> 100.0$ MOhm

**Technical Drawing**



**Configuration**

Actuators



Arrow-shaped slot



Technical data

// P36THR 1 01 - -

Rotary Code Switch

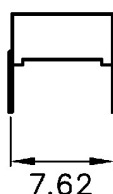
Through Hole Reflow

Codes

BCD Typ 01					
	C	1	2	4	8
0	●				0
1	●	●			1
2	●		●		2
3	●	●	●		3
4	●			●	4
5	●	●		●	5
6	●		●	●	6
7	●	●	●	●	7
8	●				●
9	●	●			●

BCD, 10

Contact pins



straight



**PTR HARTMANN**

A Phoenix Mecano Company

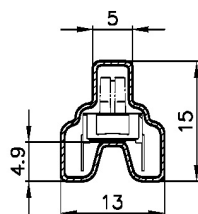
Technical data

// P36THR 1 01 - -

Rotary Code Switch

Through Hole Reflow

Packing



Tube