

**Technical data // P60ASMT 7 01 -**

Rotary Code Switch

SMT Surface Mount Technology

**Highlights**

- Solid PCB pins
- Contacts with abrasion resistant hard gold plating
- Extra sealed design with high temperature resistance
- Switches are solder and flux sealed and washable
- 100 % electronic inspection and testing

**Mechanical Data**

Type	horizontal
Fixation mode	SMT
Height	6.2 mm
Length	10.0 mm
Width	10.0 mm
Pin connection	4+1
Perm. ambient temperature	-25 °C ... +85 °C
Perm. storage temperature	-40 °C ... +85 °C
Torque	(typically) 2.5 Ncm
Mechanical lifetime	10.000 steps
Degree of protection	comparable IP67
Sealing	O-Ring
Shock and vibration testing	acc. IEC 60068
Humidity	21 days at 40 °C, 93 %RH
Reflow soldering	JDEC J-STD-020 E
Iron soldering	2 s / 340 °C

**Electrical Data**

Operating voltage	$\leq 42.0$ V
Standby current	$\leq 0.4$ A
Contact load, dynamic	$\leq 0.15$ A
Minimum load	1.0 $\mu$ A 20mVDC
Test voltage	250.0 V 50 Hz / 1.0 min
Contact resistance	$< 100.0$ mOhm
Insulation resistance	$> 100.0$ MOhm



**PTR HARTMANN**

A Phoenix Mecano Company

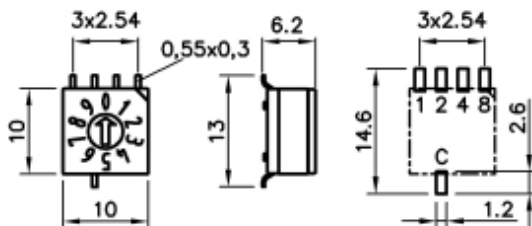
## Technical data

// P60ASMT 7 01 -

Rotary Code Switch

SMT Surface Mount Technology

## Technical Drawing



## Configuration

Standard actuators



Cross shaped slot



Technical data

// P60ASMT 7 01 -

Rotary Code Switch

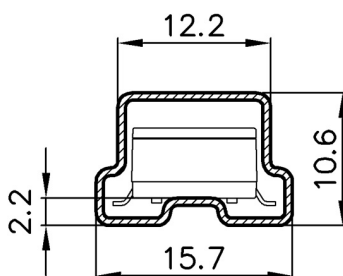
SMT Surface Mount Technology

Codes

BCD Typ 01					
	C	1	2	4	8
0	●				0
1	●	●			1
2	●		●		2
3	●	●	●		3
4	●			●	4
5	●	●		●	5
6	●		●	●	6
7	●	●	●	●	7
8	●				●
9	●	●			●

BCD, Pos 10

Packing



Tube