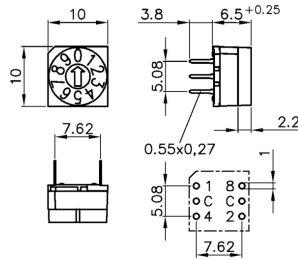
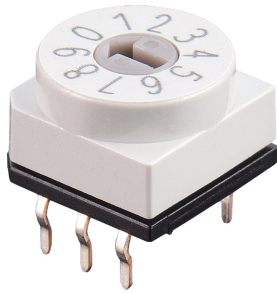


Rotary Code Switch

PT65 7 01 V



- solid PCB pins
- contacts with abrasion resistant hard gold plating
- extra sealed design
- switches are solder and flux sealed and washable
- excellent detent, once more improved
- 100% electronic final inspection and testing

Solid PCB pins ensure trouble-free assembly and safe connection. Contacts with abrasion resistant hard gold plating have low and stable contact resistance. ISO 9001:2000 approved production together with 100% electronic final inspection and testing guarantee reliable operation. Figures are clearly visible and detent mechanism is precise for fast and easy operation. Many special designs are available on request or can be built according to customer's specification.

Electrical Data

Operating voltage	≤ 42 V
Contact load, static	≤ 0.2 A
Contact load, dynamic	≤ 0.15 A
Minimum load	1μA 20mVDC
Test voltage	250V 50Hz/1min
Contact resistance	< 80 mΩ
Insulation resistanc	> 100 MΩ

Mechanical Data

Type	horizontal
Fixation mode	THT
Height	6.5 mm
Length	10 mm
Width	10 mm
Pin connection	3+3
Perm. ambient temperature	-20 ... +70 °C
Perm. storage temperature	-40 ... +85 °C
Torque (typically)	1.7 Ncm
Max. mech. lifetime	30 000 steps
Positions per rotation	4, 6, 8, 10, 16
Degree of protection	comparable IP67
Sealing	O-Ring
Humidity	21 days at 40°C, 93%RH

Other Data

Wave soldering	5s/280 °C
Iron soldering	2s/340 °C

Schock- und Vibrationstest

Sinus-vibration testing	acc. DIN IEC 68-2-6
Frequency range	10...500...10 Hz, sliding
Amplitude	6 mm
Acceleration	10 g
Shock testing	acc. DIN IEC 68-2-27
Acceleration	50 m/s ²
Duration of nominal shock	11 ms
Directions	6 (±x, ±y, ±z) 3 times each



HARTMANN

Configuration

Actuators

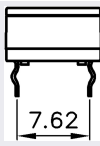


Cross shaped slot

Codes

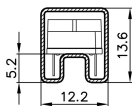
BCD , 10 Positions

Contact Pins



Crimped

Packing depending on acutator



Tube for PT65 7...