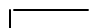




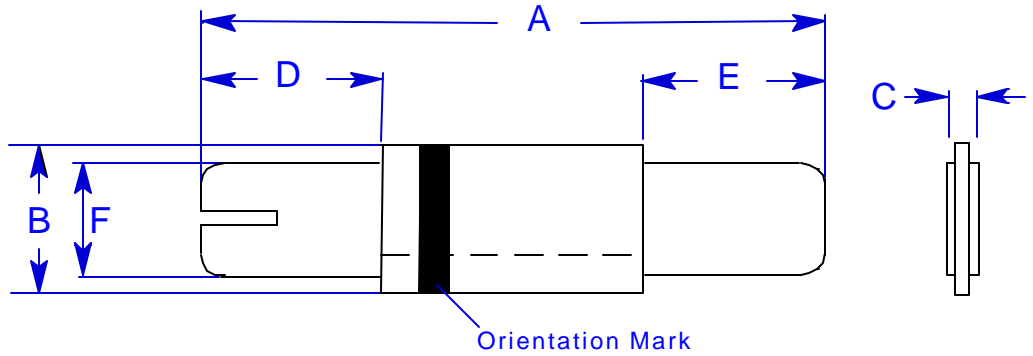
**Specification Status: Released**

**Electrical Rating**  
**Voltage: 16V MAX**  
**Current: 100A MAX**

Leads:  
 Nickel: 0.125 mm nom.

Insulation:  
 Polyester Tape

Marking:  
 Manufacturer's Mark  
 V1X Part Identification  




**TABLE I. DIMENSIONS:**

	A		B		C		D		E		F	
	Min	MAX	MIN	MAX	MIN	MAX	MIN	MAX	MIN	MAX	MIN	MAX
mm:	20.9	22.9	4.9	5.3	0.5	0.8	6.0	8.6	6.0	8.6	3.9	4.1
in*:	(0.82)	(0.90)	(0.19)	(0.21)	(0.02)	(0.03)	(0.23)	(0.34)	(0.23)	(0.34)	(0.15)	(0.16)

\*Rounded off approximation

**TABLE II. PERFORMANCE RATINGS:**

I HOLD	CURRENT TRIP LIMITS								TIME TO TRIP	REFERENCE RESISTANCE	ONE-HOUR POST-TRIP RESISTANCE	TRIPPED-STATE POWER DISSIPATION		
	AMPS AT 0°C		AMPS AT 25°C		AMPS AT 60°C		AMPS AT 80°C							
HOLD	HOLD	TRIP	HOLD	TRIP	HOLD	TRIP	HOLD	TRIP	SECONDS AT 25°C, 10.0A MAX	OHMS AT 25°C MIN	OHMS AT 25°C MAX	OHMS AT 25°C TYP	OHMS AT 25°C MAX	WATTS AT 25°C, 16V MAX
1.7	2.2	4.5	1.7	3.4	0.8	1.8	--	--	5	0.030	0.052	0.075	0.105	1.4

Reference Documents: PS300  
 Precedence: This specification takes precedence over documents referenced herein.  
 Effectivity: Reference documents shall be the issue in effect on the date of invitation for bid.  
 CAUTION: Operation beyond the rated voltage or current may result in rupture, electrical arcing or flame.